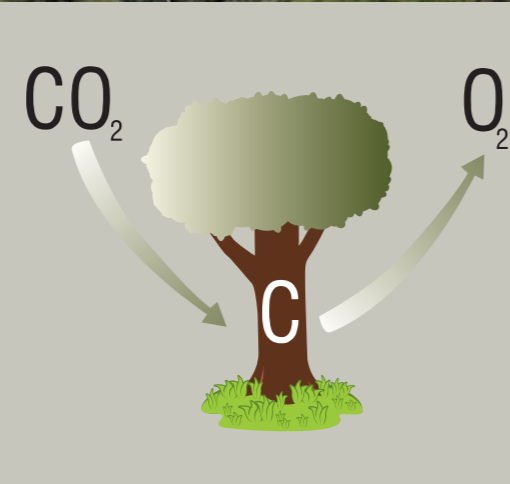
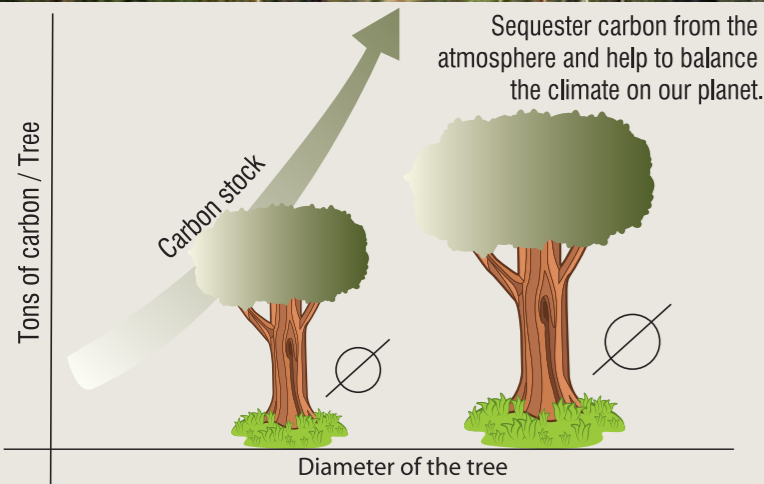
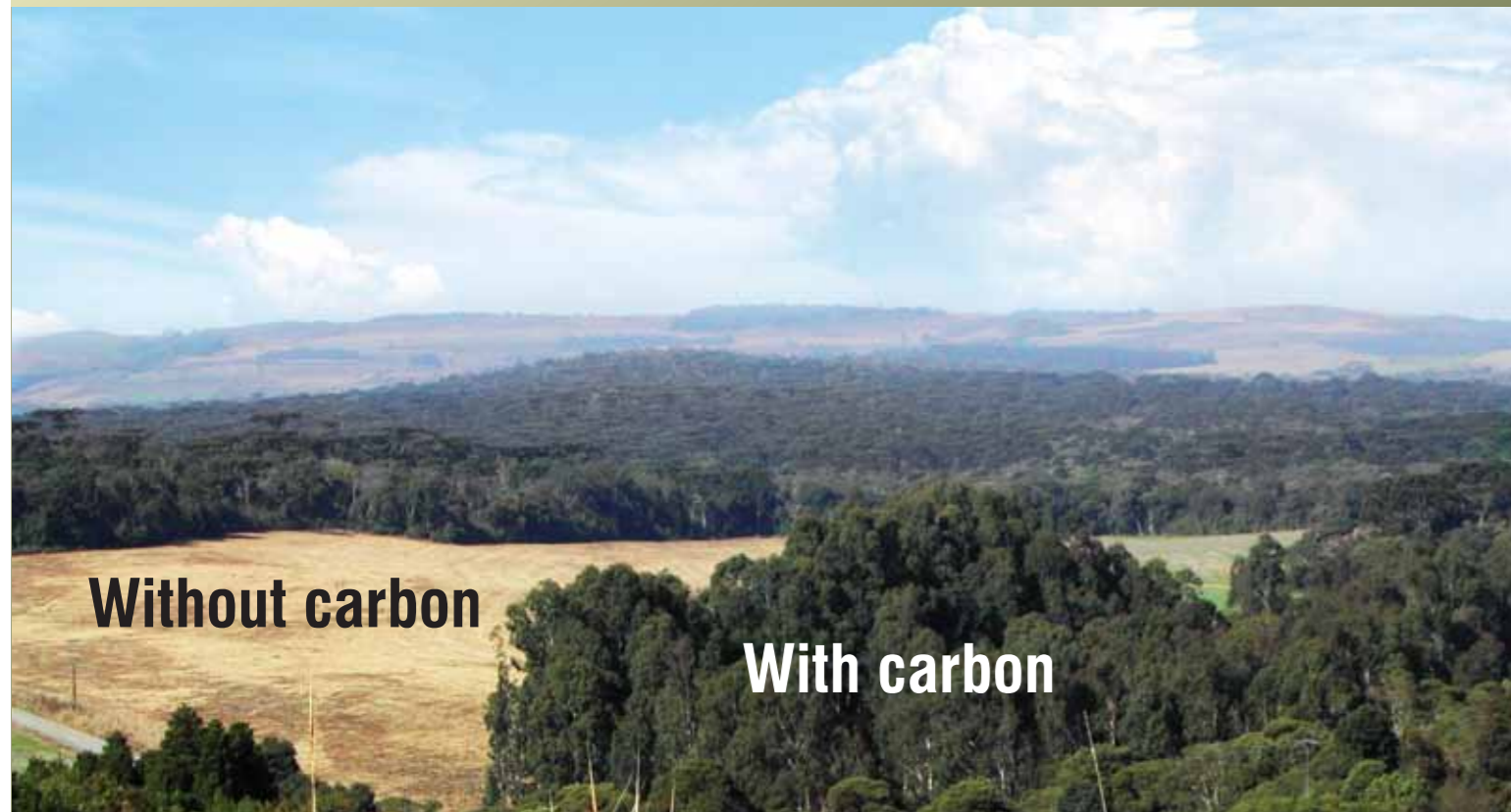


**Protecting native forests to offset greenhouse gas emissions brings guaranteed returns for your company.**

- Improved customer perceived value.
- A step forward in your company's social balance sheet.
- Possibility of using the area for company public relations purposes.
- Recognition for having the strategic vision to be involved in an initiative that generates results.



**How the forest stocks carbon:**



SPVS – Society for Wildlife Research and Environmental Education – is a Brazilian conservation organization from the third sector, founded in Curitiba in the state of Paraná in 1984.

SPVS's technical expertise focuses on the conservation of biodiversity, with extensive work in the State of Paraná and the south of Brazil, making it one of the most active institutions in the quest for protecting the last remaining natural areas of the biomes occurring in the region.

Mission: "to work for nature conservation through the protection of natural areas, environmental education actions and the development of models for the rational use of natural resources".



999, Des. Isaias Bevilaqua st. – Curitiba, PR, Brazil – ZIP code: 80430-040 – Tel: +55 (41) 3339-4638 – [spvs@spvs.org.br](mailto:spvs@spvs.org.br)  
[www.spvs.org.br](http://www.spvs.org.br)



**Avoided Deforestation Program**

Protecting natural areas is an effective action for offsetting greenhouse gas emissions.



November 2007. Photographs graciously provided by Zip Koch. Communication: Principio Comunicação